



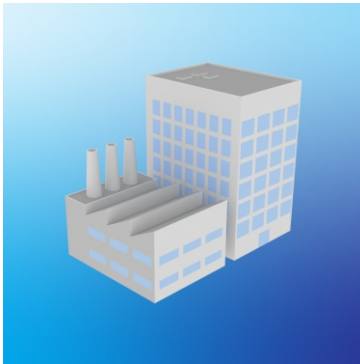
26-Port Hardened Industrial Gigabit PoE+ Rackmount Switch

TI-RP262 (v1.0R)

- 24 x Gigabit PoE+ ports
- 2 x Gigabit fiber SFP ports
- 685W Full PoE power budget
- 52Gbps switching capacity
- Hardened IP30 rated metal switch
- 1U 19" rackmount brackets included
- Extreme -40 to 75 °C (-40 to 167 °F) operating temperature range
- Redundant power inputs with overload current protection
- Powers supply sold separately (Models: TI-S48048, TI-RSP100048)
- Lifetime Warranty

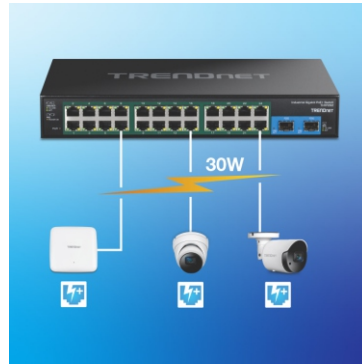
TRENDnet's Hardened Industrial Gigabit PoE+ Rackmount Switches each feature a rugged IP30 rated metal enclosure. These hardened PoE+ switches are designed to withstand a high degree of vibration and shock, while operating in both high and low temperatures for industrial environments within -40° – 75° C (-40° – 167° F). Redundant power inputs with overload current protection on each hardened PoE+ switch minimizes network downtime.

Installers and integrators can save on equipment costs and reduce installation time with TRENDnet's Hardened Industrial Gigabit PoE+ Rackmount Switches by delivering up to 30W per port of PoE power and data over existing Ethernet cables. With PoE technology, users only need one set of cables to deliver both data and power from the industrial rackmount PoE+ switch. With these hardened PoE+ switches, easily network PoE devices, such as high-power wireless access points, PTZ and other advanced IP cameras, VoIP phone systems, IPTV decoders, access controls, and more.



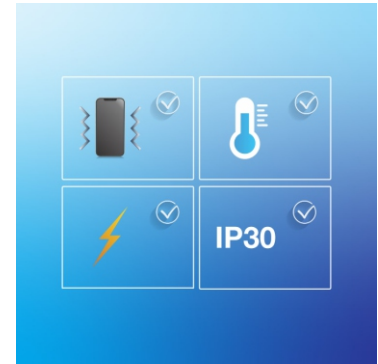
Industrial Applications

Networks devices for manufacturing, general industrial, warehousing, surveillance, and corporate applications.



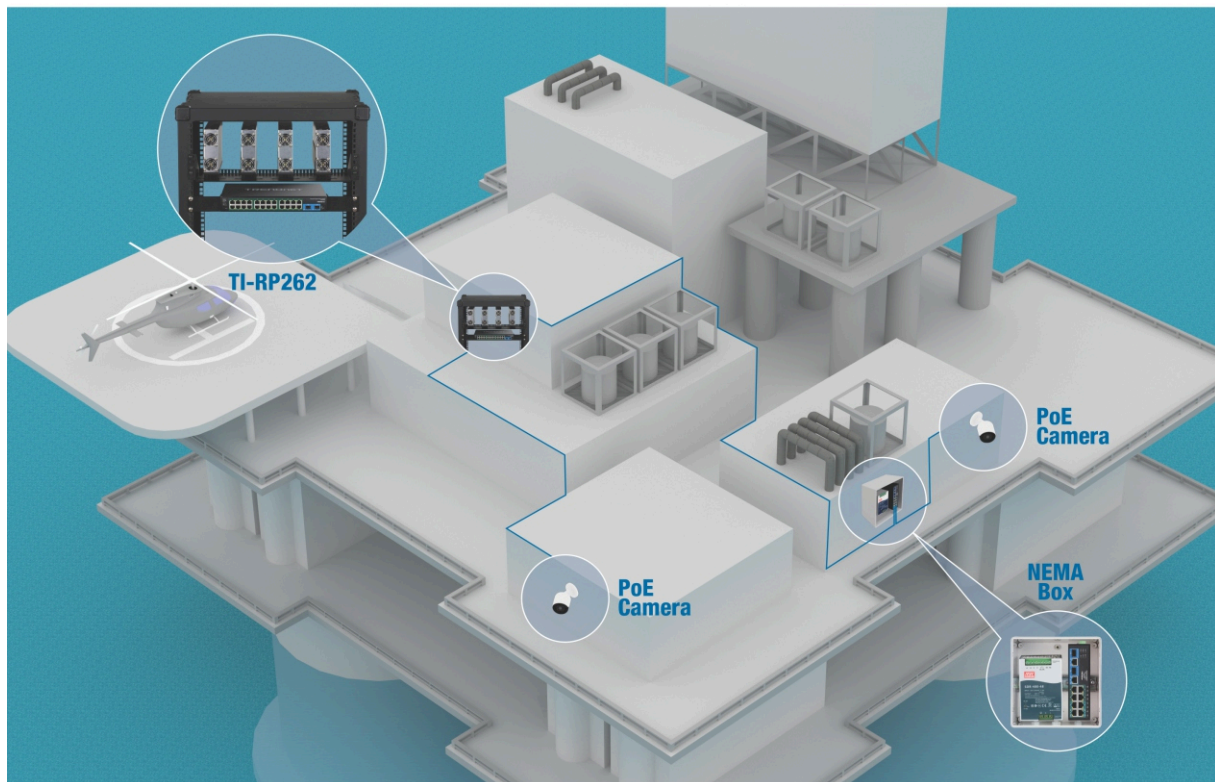
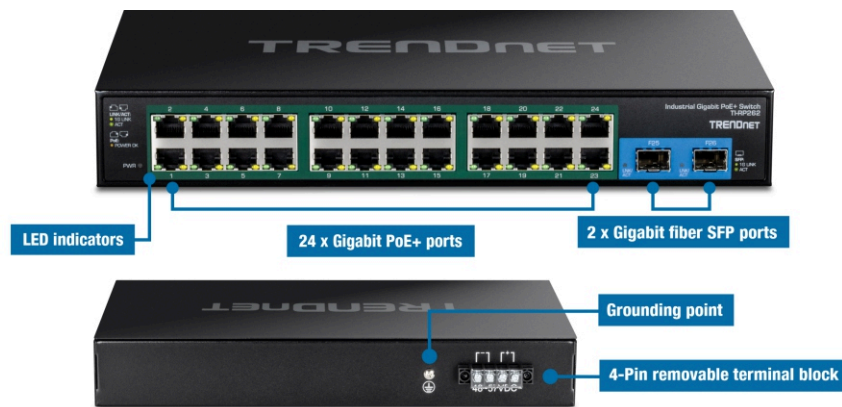
PoE+ Power

Provides full PoE+ (30 watts) per port for devices, such as access points, cameras, access control equipment, and more.



Extreme Environments

Hardened IP30 switch, with a -40 to 75 °C (-40 to 167 °F) operating temperature range, functions in most environments.



FEATURES



Full PoE+ Power Budget

Supplies up to 30W of PoE/PoE+ power per port (802.3at/802.3af) with up to a 480W PoE power budget



Network Ports

The 26-port hardened PoE+ switch features 24 x gigabit PoE+ ports, and 2 x gigabit SFP ports



Rackmount Design

With a sturdy metal housing and included rackmount brackets, this hardened PoE+ switch is well-suited for 19" 1U rack installations



Switching Capacity

The 26-port industrial hardened PoE+ switch with fiber SFP ports features a 52Gbps switching capacity



Redundant Power

Redundant power inputs on the hardened PoE+ switch support overload current protection (power supply sold separately, models: TI-S48048, TI-RSP100048)



Jumbo Frame

Sends larger packets, or Jumbo Frames (up to 9KB), for increased performance



Extreme Temperatures

This hardened 26-port rugged PoE+ switch is rated for an operating temperature range of -40 to 75 °C (-40 to 167 °F)



Electro Magnetic Compliance

Complies with FCC Part 15 Subpart B Class A, and CE EN 55032 Class A standards



Certifications

Rated for information technology (ITE), and industrial equipment (EN55032/35)



Shock and Vibration Resistant

Rated for shock (IEC 60068-2-27), freefall (IEC 60068-2-31), and vibration (IEC 60068-2-6)



Grounding Point

Grounding point on the 26-port hardened PoE+ switch protects equipment from external electrical surges

SPECIFICATIONS

Standards

- IEEE 802.3
- IEEE 802.3u
- IEEE 802.3ab
- IEEE 802.3z
- IEEE 802.3x
- IEEE 802.3af
- IEEE 802.3at

Device Interface

- 24 x Gigabit PoE+ ports
- 2 x Gigabit fiber SFP ports
- Fixed 4-pin power terminal
- LED indicators

Special Features

- Hardened components rated for extreme temperatures
- Dual power inputs
- Auto negotiation
- Auto store and forward architecture
- Automatic address learning and address aging
- ESD 8KV and Surge 2KV protection

Power

- Input: 48 - 57V DC
- Compatible power supply: TI-S48048, TI-RSP100048 (sold separately)
- Max. consumption: 5.76W (no PoE Load)

Housing

- IP30 metal case
- Rackmount
- Grounding point
- 8KV ESD protection
- 2KV surge protection

Operating Temperature

- - 40° – 75° C (-40° – 167° F)

Operating Humidity

- Max. 95 % non-condensing

Data Transfer Rate

- Ethernet: 10Mbps (half duplex), 20Mbps (full duplex)
- Fast Ethernet: 100Mbps (half duplex), 200Mbps (full duplex)
- Gigabit: 2000Mbps (full duplex)
- Fiber: 2000Mbps (full duplex)

Performance

- Data RAM Buffer: 512KB
- Switching Fabric: 52Gbps
- MAC Address Table: 8K entries
- Jumbo Frame: 9KB
- Forwarding Rate: 38.6Mpps (64-byte packet size)

PoE

- 802.3at: Up to 30W per port
- PoE budget: 685W @56V DC
- PoE Mode A: Pins 1, 2, 3, and 6 for power

Terminal Block

- Redundant power inputs, alarm relay contact, 4 pin
- Wire range: 0.34mm² to 2.5mm²
- Solid wire (AWG): 12-24/14-22
- Stranded wire (AWG): 12-24/14-22
- Torque: 5 lb. – In / 0.5Nm / 0.56 Nm
- Wire strip length: 7-8mm

MTBF

- 503,149 hours

Dimensions

- 296 x 180 x 45mm (11.65 x 7.08 x 1.77 in.)

Weight

- 1.63kg (3.6 lb)

Certifications

- CE
- FCC
- LVD
- IEC 61000-4-2
- IEC 61000-4-4
- IEC 61000-4-5
- Shock (IEC 60068-2-27)
- Freefall (IEC 60068-2-32)
- Vibration (IEC 60068-2-6)

Warranty

- Lifetime Warranty

Package Contents

- TI-RP262
- Quick Installation Guide
- Rackmount Kit

All references to speed are for comparison purposes only. Product specifications, size, and shape are subject to change without notice, and actual product appearance may differ from that depicted herein.

TRENDnet offers a lifetime warranty for all of its metal-enclosed network switches that have been purchased in the United States/Canada on or after 1/1/2015. Cooling fan and internal power supply carry a one-year warranty.