



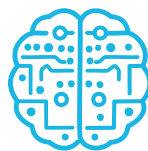
LumiCenter VMS

Unifying Security, Amplifying Intelligence



Unified Control Interface:

Seamless integration and management of multiple devices from one interface.



Advanced Analytics:

On-board camera analytics and AI-based analytics detection.



Real-Time Monitoring:

Timely alerts with automated event responses.

LumiCenter Overview

LumiCenter is a state-of-the-art video management software (VMS) designed to seamlessly integrate surveillance cameras, AI-based analytics, and robust server software with web clients and mobile applications. The software enables you to take a proactive stance on security, predicting and alerting to potential incidents before they escalate. Dynamic map navigation and response systems let you quickly access video feed and automate responses. LumiCenter eliminates the common frustrations of most video management systems and provides a streamlined, intelligent solution to video monitoring and management.

AI-Powered Analytics



LumiCenter AI Tracker Channel

- The LumiCenter AI Tracker Channel (LCE-AIT) is AI solution to integrate seamlessly with the LumiCenter Plus/Max platform, providing advanced AI-driven features to enhance video surveillance capabilities.



LumiSearch VMS: Tag and Track People

- AI analytics extracts human appearance features and stores them in a database.
- Select a person in a video frame or upload a photo to quickly find similar individuals within security footage from multiple cameras.



Real-time Analytics: Advanced Motion Detection

- AI analytics extracts human appearance features and stores them in
- Supports embedded camera analytics for important scene metadata and information.
- Supports ONVIF profiles M and T.
- Reduces false events and alerts with state-of-the-art algorithms.



Web, Desktop, and Mobile Clients

- Access LumiCenter from any device.
- Easily change video viewing and analytic settings and monitor video feeds from anywhere.



PanoMerge™

- Seamlessly combine feeds from up to three (3) cameras to create a panoramic view.
- View live or playback panoramic video
- Export panoramic footage as standard .avi or .mkv files.
- Select and zoom into any part of the merged image.

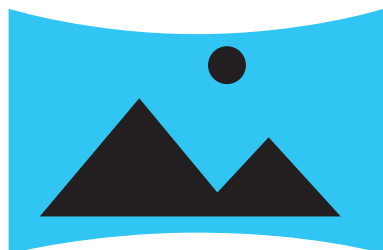
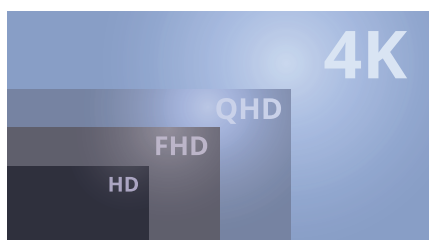


Image Dewarping

- Dewarp and correct images without any additional burden on the client CPU.



AutoStream™

- Automatically chooses a camera stream that matches the client's screen resolution.
- Saves network bandwidth and client CPU resources using adaptive video streaming.

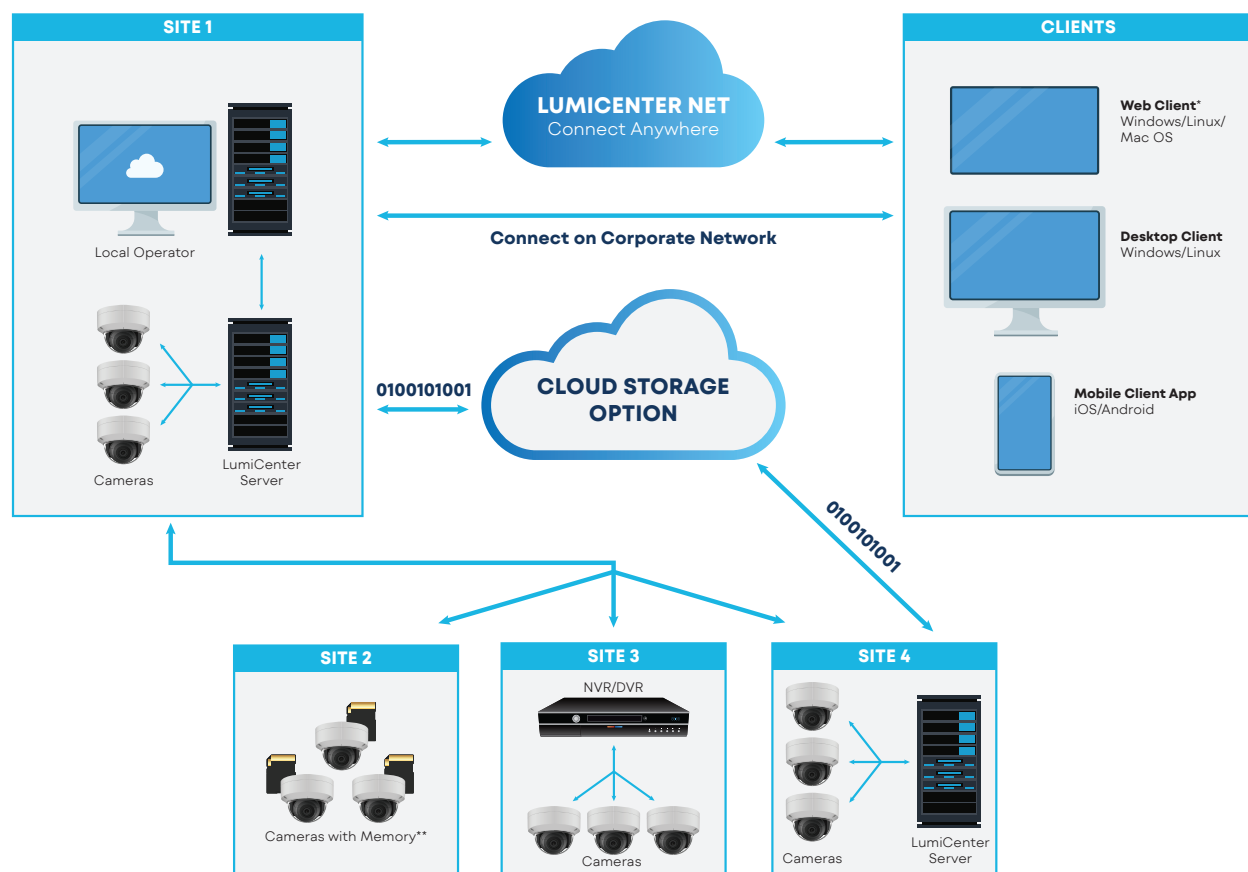


LumiCenter Net

- Provides an intuitive, user-friendly web client without the need for port forwarding or an open network port.
- View live or recorded video remotely from any HTML 5 supported browser.

LumiCenter System Diagram

LumiCenter is designed to be an all-in-one integration and management hub for your surveillance and access control devices. It allows you to store data at the edge, locally, or in a centralized server. Access your systems and information no matter where you are or what device you are on with LumiCenter Net and our various clients.



Key Features

- **Scalable** to suit any type and size of application.
- **ONVIF support** for compatibility with thousands of third-party IP cameras and devices.
- **Advanced AI-based video analytics** and embedded camera analytics.
- **LumiSearch** enables quick location of objects and individuals in recorded footage.
- **One-time license fee** with no annual maintenance.

*Web Client requires HTML 5.x or later.

**Camera edge storage adds another layer to video storage (optional).



LumiCenter VMS supports ONVIF profiles G, M, S and T for maximum IP camera and device compatibility. There are three variants of LumiCenter: Basic, Plus and Max. The software license has no annual maintenance fee.

Choose the LumiCenter version that fits your needs.

| Features | LumiCenter Basic | LumiCenter Plus | LumiCenter Max |
|--|------------------|-----------------|----------------|
| SKU | LCE-BASV | LCE-PLSV | LCE-MAXV |
| Max # Distributed Servers | 30 | 30 | unlimited |
| Max # Cameras | unlimited | unlimited | unlimited |
| Real-time Analytics (Object Tracker) | Y | Y | Y |
| Edge Analytics (Camera Metadata) | Y | Y | Y |
| Edge Storage (Playback Only) | Y | Y | Y |
| AutoStream™ Bandwidth Management | Y | Y | Y |
| Interactive 3D Map | Y | Y | Y |
| Web Client | Y | Y | Y |
| Timeslice Search (Search by Time Intervals) | Y | Y | Y |
| Privacy Masking | Y | Y | Y |
| Macros (Event-Response Scenarios) | Y | Y | Y |
| ONVIF Profiles G, S, T, M | Y | Y | Y |
| Video Bookmarking (Searchable Text Comments) | Y | Y | Y |
| PanoMerge™ | Y | Y | Y |
| LumiCenter Net (Cloud Service) | | Y | Y |
| Reports | | Y | Y |
| Cross-System Client | | Y | Y |
| Videowall | | Y | Y |
| LumiSearch VMS | | | Y |
| Storage Replication | | | Y |
| Failover | | | Y |
| LDAP Service | | | Y |

Add more power to your system with LumiCenter add-ons*.

| Features | SKU | LumiCenter Basic | LumiCenter Plus | LumiCenter Max |
|---------------------------------------|----------|------------------|-----------------|----------------|
| LumiCenter Access Control | LCE-AC | Y | Y | Y |
| LumiCenter AI Tracker | LCE-AIT | | Y | Y** |
| LumiCenter Face Recognition | LCE-FR | | Y | Y |
| LumiCenter Face Recognition - 10 Pack | LCE-FR10 | | Y | Y |
| LumiCenter LPR | LCE-LPR | | Y | Y |
| LumiCenter LPR Search | LCE-LPRS | | Y | Y |
| LumiCenter PPE | LCE-PPE | | Y | Y |

Add-on video modules require the purchase of LumiCenter Basic, Plus or Max video license.

*Add-on Modules require a LumiCenter video license.

** Already Included in LumiCenter Max

Luminys Systems Corporation

Luminys Systems Corporation leads the way in helping businesses build smart, sustainable, and secure ecosystems with integrity. Connected solutions and services offer safety, insight, intelligence, and operational efficiency.

With a focus on ingenuity and exceptional customer support, Luminys delivers future-ready products that adapt to the evolving needs of various industries. As a U.S.-based subsidiary of Foxlink, a global leader in electronics manufacturing, Luminys is trusted by customers and partners worldwide to deliver advanced technology solutions and services shaping a sustainable, smarter future.

Contact

Tel: (949) 679-7777

Address: 15245 Alton Pkwy, Irvine, CA 92618

Email: sales@luminyscorp.com

Website: <https://www.luminyscorp.com/>



Scan the QR code to join our Luminys MVP Program and unlock exclusive benefits, including special pricing, extended warranties, and priority support. Don't miss out on enhancing your business with our premium solutions!