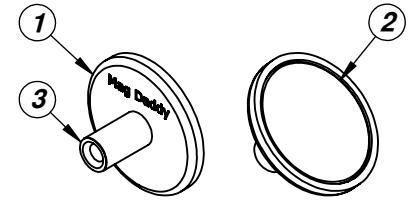
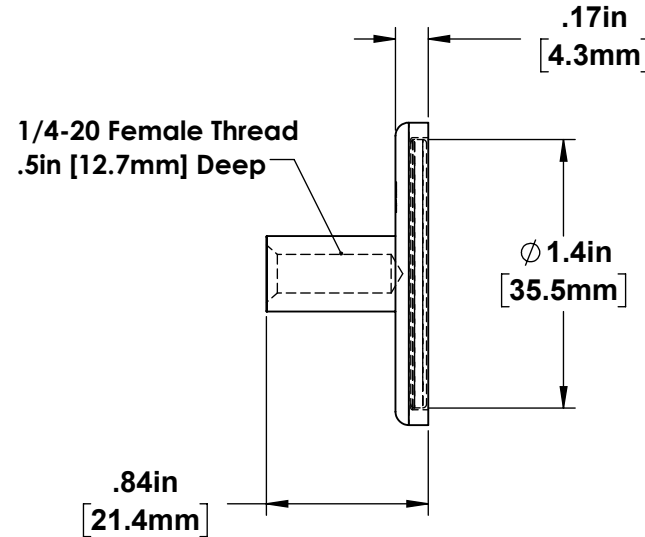
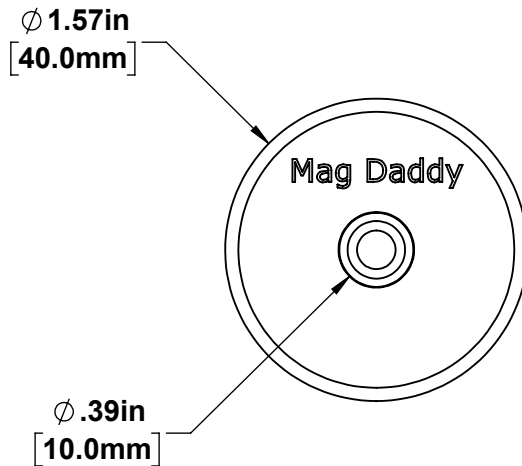


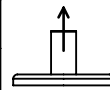
MAG4TF

ITEM NO.	PART NUMBER	DESCRIPTION	MATERIAL	FINISH	QTY.
1	MAGNET CUP 40mm	MAGNET CUP Ø1.57" (40mm) 1/4"-20 THREAD	CRS DC01 Steel	NiCuNi	1
2	MAGNET	90 LB., N45M, Ø1.4" (35.5mm)	NdFeB 45M	NiCuNi	1
3	1/4-20 STANDOFF	1/4"-20 X 3/4" BLIND THREADED STANDOFF	CRS DC01 Steel	NiCuNi	1



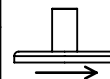
Mechanical Tensile Strength: 90 LBS. (400N)

ALL TESTING PERFORMED USING
3mm MIN. THICK 1008-1010 STEEL PLATE



Mechanical Side Load Tensile Strength: 25 LBS. (111N)



ALL TESTING PERFORMED USING
3mm MIN. THICK 1008-1010 STEEL PLATE



Please read before use! Disclaimer: Mag Daddy neither assumes nor accepts any liability for damages resulting from the handling or use of magnets. With your purchase, the buyer confirms that you have read and understand the following warnings: the buyer agrees that he/she is responsible for all damages/injuries caused by the magnets, which includes personal injuries, property damages or magnet damages. The buyer must agree with the terms before purchase. Pull forces we have provided are estimates only, we are not responsible for any inaccuracy of the magnet pull force. *Please test the pull force before any usage.* Magnets are very strong. Handling them with care is necessary to prevent personal injuries, property damages and magnet damages.
CAN BE HARMFUL TO PACEMAKER WEARERS and others with MEDICAL IMPLANTS.

INDOOR USE RECOMMENDED

OPERATING TEMPERATURE - -40° - 176° F (-40°- 80°C)

CONFIDENTIAL: USE OF THIS DRAWING WITHOUT WRITTEN AUTHORIZATION BY MAG-DADDY, LLC IS PROHIBITED		INCH <input checked="" type="checkbox"/> MM <input type="checkbox"/>	SCALE: 1:1	Sheet Size: A
<u>GENERAL TOLERANCE</u> UNLESS OTHERWISE SPECIFIED: ± .020 (.51mm) ANGLES: ± 5°		<div>THIRD ANGLE  PROJECTION</div> <div>APV. <input type="checkbox"/> Rev: 01</div> <div> 295 Jamie Ln. Wauconda, IL 60084 www.magdaddyusa.com PH:(847) 719-5600</div> <div>DWN. SS DATE: 05/30/2023</div>		
MATERIAL: SEE BOM	PART DESCRIPTION: 1/4-20" Female Threaded Magnet Mount, 90 lbs		PART NO. MAG4TF	

LAST PRINT DATE: 6/12/2023